

ClearOne®

CHAT® 50 Personal Speaker Phone



ClearOne® Contacts

Headquarters

5225 Wiley Post Way
Suite 500
Salt Lake City, UT 84116

US & Canada

Tel: +1.801.975-7200
email: global@clearone.com

International

Tel: +1. 801.975.7200
email: global@clearone.com

Sales

Tel: +1.801.975.7200
email: sales@clearone.com

Technical Support

Tel: +1.801.974.3760
email: techsupport@clearone.com

Notices

© 2021 ClearOne, Inc. All rights reserved.





Information in this document is subject to change without notice.

Document: 800-159-002v3.3 April 2021

Important Safety Instructions

1. Read, follow and keep these instructions.
2. Heed all warnings.
3. Do not use this apparatus near water.
4. Clean only with dry cloth.
5. Do not block any ventilation openings. Install in accordance with the manufacturer's instructions.
6. Do not install near any heat sources such as radiators, heat registers, stoves, or other apparatus (including amplifiers) that produce heat.
7. Do not defeat the safety purpose of the polarized or grounding-type plug. A polarized plug has two blades with one wider than the other. A grounding type
8. plug has two blades and a third grounding prong. The wide blade or the third prong are provided for your safety. If the provided plug does not fit into your outlet, consult an electrician for replacement of the obsolete outlet.
9. Only use attachments/accessories specified by the manufacturer.
10. Unplug the array during lightning storms or when unused for long periods.
11. Refer all servicing to qualified service personnel. Servicing is required when the apparatus has been damaged in any way, such as power-supply cord or plug is damaged, liquid has been spilled or objects have fallen into the apparatus, the apparatus has been exposed to rain or moisture, does not operate normally, or has been dropped.
12. Protect the PoE injector's power cord from being walked on or pinched; particularly at plugs, convenience receptacles, and the point where they exit from the apparatus.
13. Never push objects of any kind into this product through cabinet slots as they may touch dangerous voltage points or short out parts that could result in fire or electric shock.

- 14. This product can interfere with electrical equipment such as tape recorders, TV sets, radios, computers and microwave ovens if placed in close proximity.
- 15. Class 2 wiring IS REQUIRED. Only qualified personnel should wire and install.
- 16. Underwriters Laboratories (UL) requires these safety notifications:

| | | | | |
|---|--|---|--|---|
| <p>WARNING: TO PREVENT FIRE OR ELECTRICAL SHOCK HAZARD, DO NOT EXPOSE THIS PRODUCT TO RAIN OR MOISTURE</p> |  <p>THE LIGHTNING FLASH AND ARROWHEAD WITHIN THE TRIANGLE IS A WARNING SIGN ALERTING YOU OF DANGEROUS VOLTAGE INSIDE THE PRODUCT.</p> | <p>CAUTION</p> <p>RISK OF ELECTRIC SHOCK DO NOT OPEN</p> <p>AVIS RISQUE DU CHOC ELECTRIQUE - NE PAS OUVRIR</p> <p>CAUTION: TO REDUCE THE RISK OF ELECTRIC SHOCK, DO NOT REMOVE COVER (OR BACK) NO USER SERVICEABLE PARTS INSIDE. REFER SERVICING TO QUALIFIED SERVICE PERSONNEL.</p> |  <p>THE EXCLAMATION POINT WITHIN THE TRIANGLE IS A WARNING SIGN ALERTING YOU OF IMPORTANT INSTRUCTIONS ACCOMPANYING THE PRODUCT.</p> | <p> Use only in non-tropical locations.</p> <p> Use only at altitudes of 2000 meters or less.</p> |
| SEE MARKING ON BOTTOM/BACK OF PRODUCT | | | | |

System Requirements

Microsoft Windows XP SP2, Vista, 7, 8, and 10

Packing List

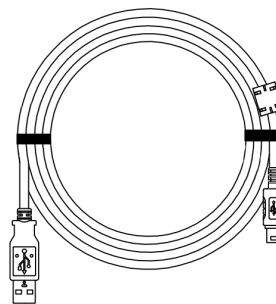
Verify that you have received all parts associated with each of the components.

Inspect your shipment carefully. If the shipment shows obvious signs of damage, retain the original boxes and packing material for inspection by the carrier, and contact them immediately. ClearOne is not responsible for product damage incurred during shipment.

CHAT 50



Cable, with mini USB B male connector and USB A male connector, 3 ft.



Configuring and Testing

| If... | Then... |
|--|--|
| You plan to use the CHAT 50 only with a PC | You can use the CHAT 50 right out of the box . You do not need to download or install software. |
| You plan to use it with another device | Follow the Configure and the Setup instructions in the CHAT 50 User Manual . |
| The CHAT 50 firmware requires an update | Follow the Update Firmware instructions in the CHAT 50 User Manual . |

Consult the [CHAT 50 User Manual](#) for all device and software configuration procedures as needed.

CHAT 50 Audio Configuration

To ensure optimal sound quality, the CHAT 50 **must** be tuned properly prior to use or after the device has been moved. The audio settings must also be customized for the specific application it is to be used with and for the specific device it is to be connected to.

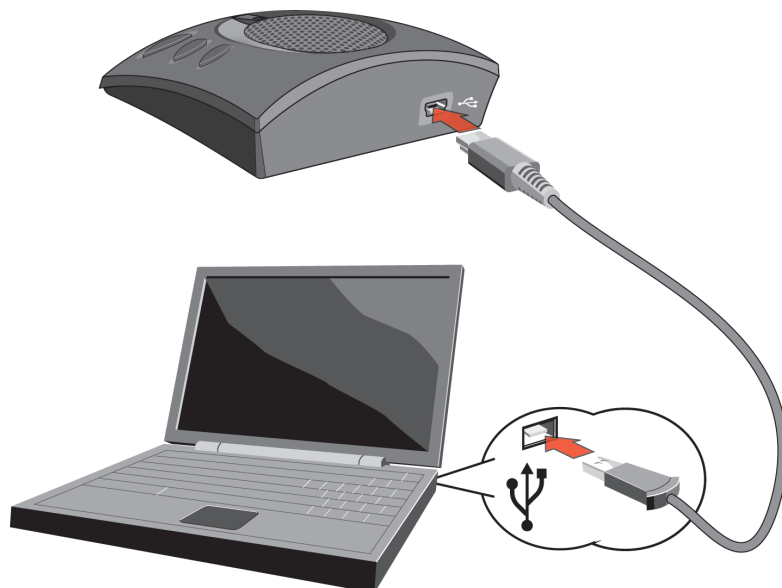
If the CHAT 50 is attached to a PC, it derives its audio settings from the Windows sound settings or through a third-party application's settings (Skype, etc.).

For optimal sound quality, follow the tuning procedures in the **Optimizing Sound Quality** section in the [CHAT 50 User Manual](#) or consult the specific 3rd party application's tuning adjustments.

Connecting the CHAT 50

The illustration below illustrates how to connect your CHAT 50 to a PC.

Instructions about how to connect the CHAT 50 to other devices are available in the [CHAT 50 User Manual](#).



Using the CHAT 50

LED Indicators

Three Microphone LEDs

Blue = Active

Red = Muted



Volume and Mute Buttons

Use the Volume Up/Down buttons (indicated by a large dot and a small dot) to adjust the volume level of the CHAT 50 . Holding down either button will change the volume rapidly.

Use the Mute button to mute the microphone until the Mute button is pressed again. If you are using the CHAT 50 with a PC, you can also use the Speaker Volume Control in Windows, as well as the CHAT 50 software to adjust the volume and mute the microphone.