

ClearOne®

INTERACT™ AT-OC for Microsoft® Lync™ Server 2010 QUICK START GUIDE

OPTIMIZED FOR
Microsoft® Lync™



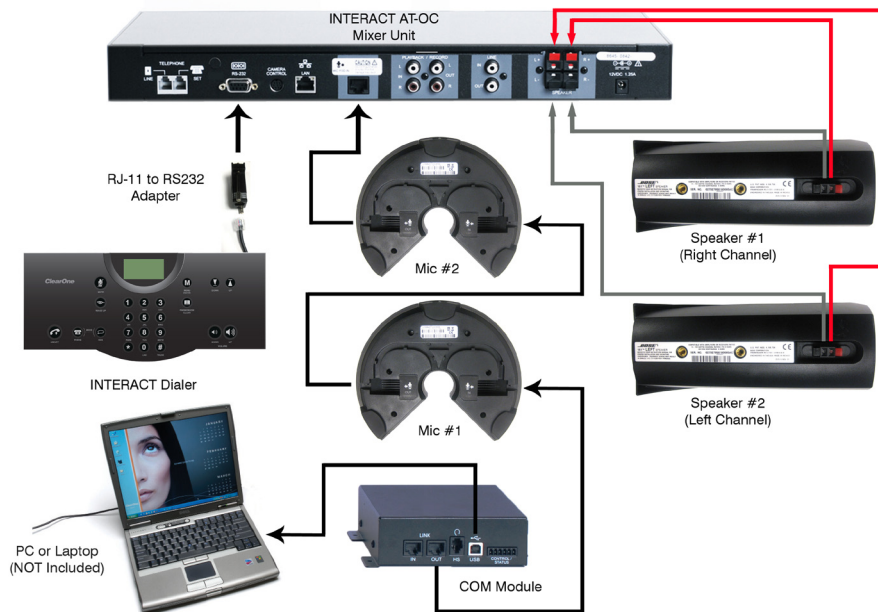
MAIN ITEMS INCLUDED IN BUNDLE

INTERACT AT-OC Mixer with Power Supply, Two (2) Mic Units, Two (2) Bose® Wall Mount Speakers, One (1) INTERACT COM Unit, One (1) INTERACT Dialer, One (1) RJ-11 to RS232 Adapter, One (1) USB-A/B Cable, Three (3) 12' CAT5 Cables and One (1) 25' CAT5 Cable.

CONNECTING THE INTERACT AT-OC COMPONENTS

* The recommended method of connecting the INTERACT AT-OC is described and shown below.

1. Connect a 12' CAT5 cable from the Link Out port on the back of the COM module to the Link In port on the bottom of MIC #1.
2. Connect a 12' CAT5 cable from the Link Out port of MIC #1 to the Link In port on MIC #2.
3. Connect the 25' CAT5 cable from the Link Out port of MIC #2 to the Link In port on the back of the mixer.
4. Insert the RJ-11 connector into the RJ-11 to RS232 Adapter and connect the adapter to the RS232 port on the back of the mixer.
5. Connect the power supply to the mixer.



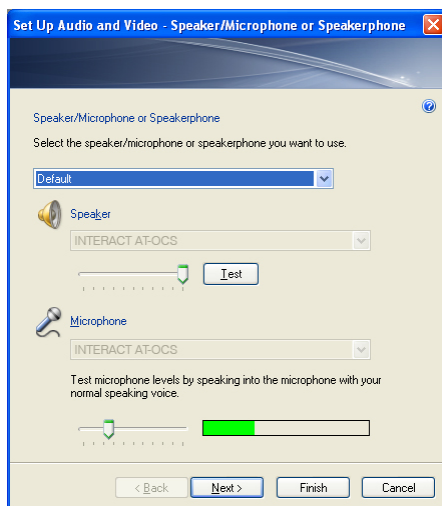
CONNECTING THE INTERACT AT-OC TO THE PC

Once the components are connected, use the USB cable to connect the INTERACT COM module to the PC.

Plug the power supply into an outlet and turn the system on.

AUDIO TUNING WIZARD

Once the system is turned on the first time, start up the Microsoft® Lync™ 2010 application and perform the Audio Tuning procedure. The Audio Tuning Wizard can be found in the Tools section of the Lync 2010 application.



* In order to substantiate a Lync Server 2010 call, press the OCS button on the INTERACT AT-OC Dialer prior to placing a call.

* For Advanced Configuration of the system, please consult the product CD.